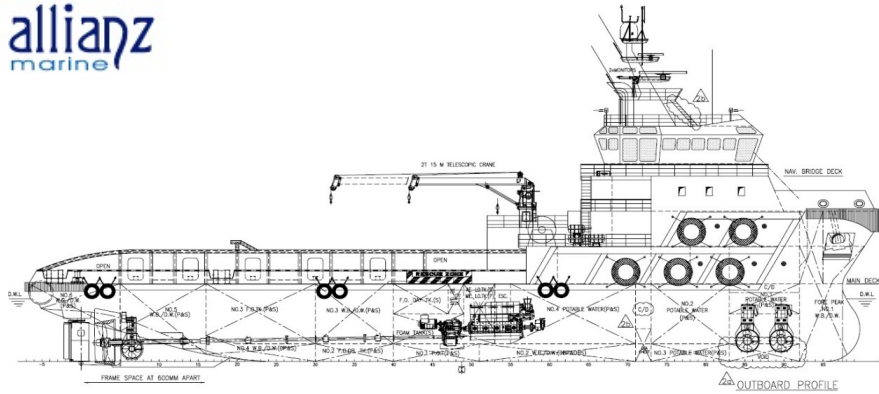


## PRINCIPAL PARTICULARS

Length Overall	65.00m
Length BP	58.50m
Breadth Moulded	16.00m
Depth Moulded	6.20m
Draft (designed)	5.00m
Built	2013, China
GRT/NRT	2950/ 885 (approx)
Flag (Port of Registry)	Singapore



## 65M - 2x3300PS ANCHOR HANDLING TUG / OIL RECOVERY / SUPPLY VESSEL

Owner	S
Shipyard	F
Class / Notation	ABS ✱ A1 (E) Offshore Support Vessel, AH, Towing Vessel, Fire Fighting Ship Class 1, Oil Recovery Capability Class 1, ✱ AMS, DPS-2. Comply to SPS Code

### PERFORMANCE

Maximum Speed	13.8 Knots @ 100% MCR
Economical Speed	12.8 Knots @ 85% MCR
Type of Fuel	Marine Gas Oil
Fuel Consumption	21 m3/24 hours @ 100 MCR 16 m3/24 hours @ 85% MCR
Bollard Pull	80 Tons

### ACCOMMODATION

Berths	8 x 1 berth cabin = 8 3 x 2 berth cabin = 6 9 x 4 berth cabin = 36 Total 50
Hospital	1 x 1 berth cabin = 1
All cabins fully air-conditioned & c/w attached washroom.	

### CARGO CAPACITIES

Deadweight	1800 Ton (approx)
Deck Cargo	600 mt (approx)
Deck Strength	7 Ton/m2 uniform loading
Clear Deck Area	435 m2 (approx)
Fuel Oil	550 m3 (approx)
Fresh Water	350 m3 (approx)
Ballast/Drill Water	550 m3 (approx)
Mud/Brine/R.O.	400 m3 (approx)
Cement	150 m3 (approx)
Freezer / Chiller	10 m3 / 10 m3
Foam / Detergent	10 m3 / 10 m3
Rig Chain Locker	Nil

### PUMPS

Fuel Oil	1 x 150 m3/hr @ 70 m head
Fresh Water	1 x 100 m3/hr @ 70 m head
SWB/Drill Water	1 x 100 m3/hr @ 70 m head
Liquid Mud/Brine/R.O.	2 x 100 m3/hr @ 70 m head
Bilge/Ballast/GS/Fire	2 x 100 m3/hr @ 70 m head
Bilge	2 x 45 m3/hr @ 30 m head
Bulk Cement Compressor	2 x 13 m3/min @ 80psi

### PROPULSION SYSTEM

Main Engines	2 x 3300PS (Niiyata 8L28H) @ 750RPM
Main Generator	3 x 450kw diesel driven, 415V/3Ph/50Hz (CAT)
Shaft Generator	2 x 900kw
Emergency Generator	1 x 99kw. (CAT)
Bow Thruster	2 x 10 Ton Thruster, approx 600kw, CPP (Kawasaki Wuhan)
Stern Thruster	1 x 8 Ton Thruster (Kawasaki Wuhan)
CPP	Berg

### MISCELLANEOUS

Liferafts	6 x 25, SOLAS standard, ChinaMake
Rescue boat	1 x 6 c/w inboard diesel engine
Oily Water Separator	1 x 1.0 m3/hr, Ocean clean/ Boss
Water Maker	1 x 10 T/day, Sea recovery/Peter Taboada
Sewage Treatment Plant	1 x 50 men/day, Taixing/Taiko

### DECK EQUIPMENT

Anchor Windlass	2 x 10T @ 9m/min, electro hydraulic
Drum	Nil
Gypsies	suitable for 32mm dia U2 chain
Bow Anchors	2 x 1,4400kg HHP Stockless Anchor
Chains	2 x 440 m (L) x 32 mm (Dia), Grade U3
Capstan	2 x 10T @ 15 m/min electro hydraulic
Tugger Winch*	2 x 10 mt @ 15 m/min electro hydraulic
Drum Capacity	250 m x 22 mm Dia
Deck Crane	1 x 2 Ton @ 15m (China Make)
Towing /AH Winch*	Electro Hydraulic drive, double drum waterfall type
Upper Drum (Tow)	60 mm dia x 1200m
Lower Drum Cap (AH)	60 mm dia x 1200m
Static Brake	250 Ton
Stern Roller	
Lock Jaws	1 x Hydraulic 250 SWL
Tow Pin	2 x Hydraulic 250 SWL
Storage Reel	1 x 6 Ton @ 20 m/min

### RADIO & NAVIGATION EQUIPMENT

GMDSS Area A1 + A2 + A3, consist of:	
Inmarsat C	1 x Furuno Felcom-15
VHF Radio	2 x Furuno FM-8800S
Navtex Receiver	1 x Furuno NX-700B
SART	2 x McMurdo S4
EPIRB	1 x McMurdo E5
Portable VHF Radios	3 x McMurdo R2
Radar	2 x Furuno FAR2117
Echo Sounder	1 x Furuno FE-700
DGPS	1 x Furuno GP-150
Gyrocompass	1 x Anschutz Standard 22
Autopilot	1 x Anschutz PilotStar D
Magnetic Compass	1 x Lilliey-Gillie MK2000
Weather Fax	1 x Furuno FAX-408
Speed Log	1 x Furuno DS-80
Wind Indicator	1 x Gill Ultrasonic
AIS	1 x Furuno FA-150
BNWAS	1 x Furuno
Fleet Broadband	1 x Furuno
DP	DP 2 System Kongsberg
Joystick	1 x Kongsberg Portable Control Station
Vessel also fitted with PA Talkback System & Self-powered Telephone.	

### FIRE-FIGHTING EQUIPMENT & ANTI-POLLUTION EQUIPMENT

<b>EXTERNAL</b>	
FiFi System	Class 1 with water curtain all round
Fire Pump	2 x 1650 m3/hr @ 140m head
Monitors	driven by front PTO ME
	water/foam 2 x fire monitors
Oil Dispersant System	2 x Cluster nozzles or overhang boom

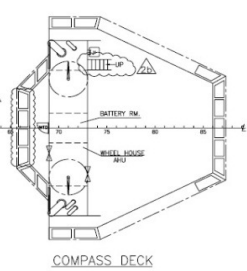
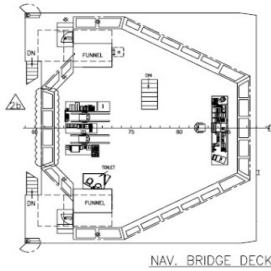
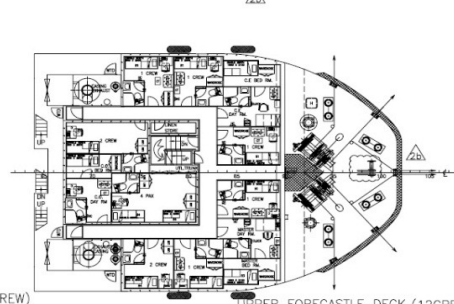
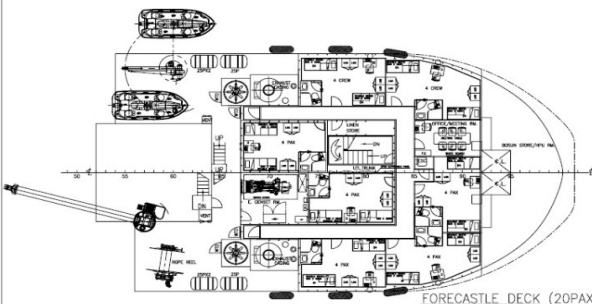
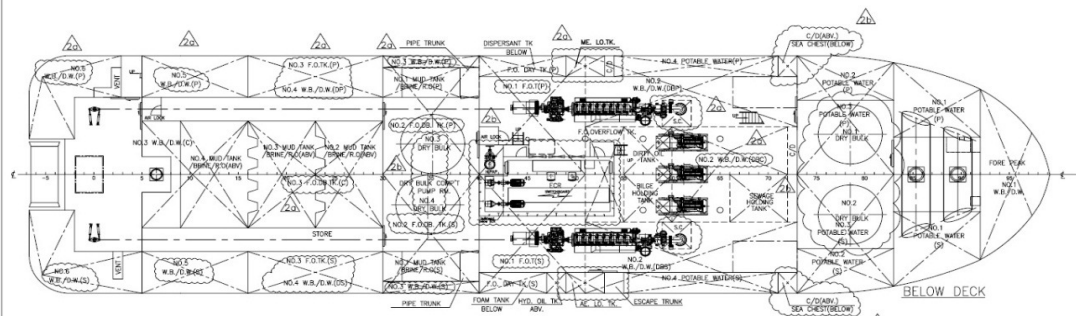
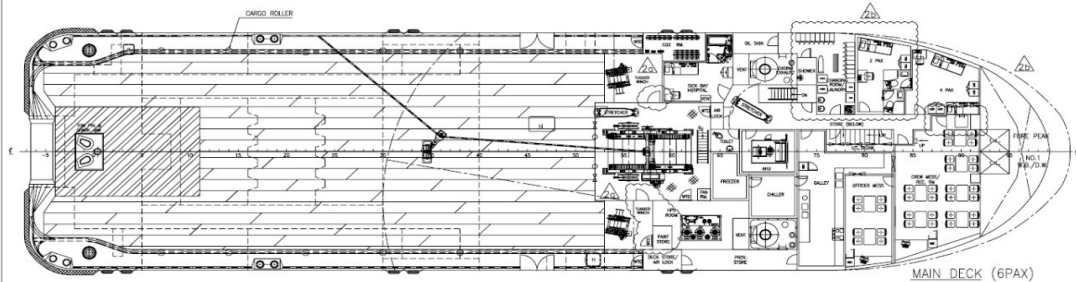
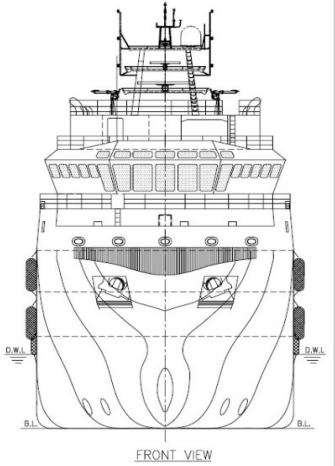
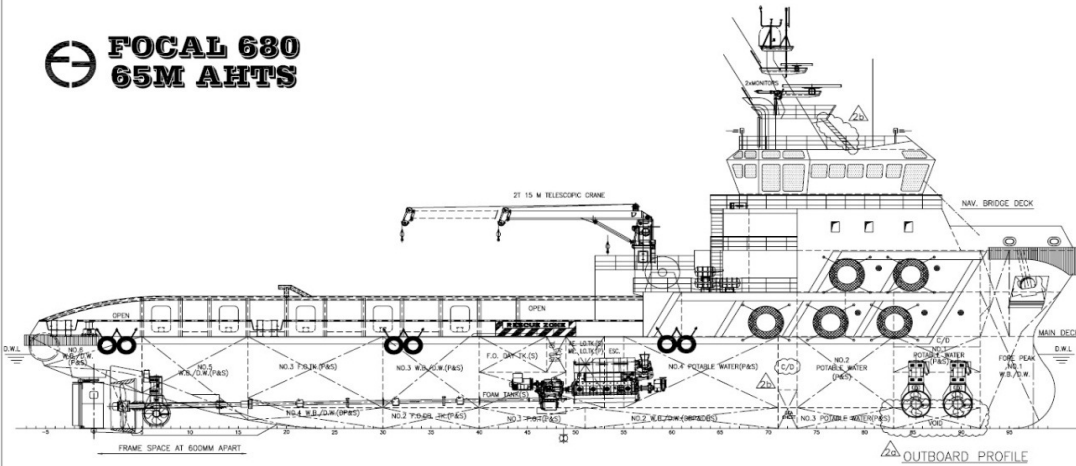
### INTERNAL

Emergency Fire Pump	1 x 45 m3/hr x 60m head
BA Recharging Comp	1 x 75 ltr/min @ 200 bar
CO2 system in engine room	

\* AHTW and Tugger Winch - working wires not included.

Particulars are believed to be correct but not guaranteed. All figures given are approximately only. Owners reserve the right to amend the specifications without notices.

# FOCAL 680 65M AHTS



### PRINCIPAL PARTICULARS

LENGTH OA	65.00m
LENGTH BP	58.50m
BEAM MLD.	16.00m
DEPTH MLD.	6.20m
DRAFT DESIGNED	5.00m
DRAFT SCANTLING	5.20m
COMPLEMENT	50 MEN

MAIN ENGINE	2 x 3,300 PS
TRIAL SPEED	12.5 KTS
BOLLARD PULL	80 T

### APPROXIMATE CARGO CAPACITIES

DEADWEIGHT	1,500 T
CARGO DECK AREA	435 M <sup>2</sup> @ 7T/M <sup>2</sup>
DECK CARGO	600 T

FUEL OIL	550 M <sup>3</sup>
WB/DW	550 M <sup>3</sup>
POTABLE WATER	350 M <sup>3</sup>
MUD/BRINE/R.O.	400 M <sup>3</sup>
CEMENT	150 M <sup>3</sup>

2b	AMENDED AS PER YARD COMMENTS	N.K.	JUL-17-2012
2a	AMENDED AS PER DESIGN PROGRESS	N.K.	JUL-17-2012
1	AMENDED AS PER DESIGN PROGRESS	N.K.	JUN-18-2011
0	PRELIMINARY ISSUE	N.K.	JUL-25-2011
REV NO.	REVISION DESCRIPTION	BY	DATE
OWNER: STEADY OFFSHORE INC			
BUILDER: FUJIAN SOUTHEAST SHIPYARD			
PROJECT: 65M ANCHOR HANDLING TUG/OIL RECOVERY / SUPPLY VESSEL "FOCAL 680"			
APPROVE:		DWG TITLE:	JOB NO: P-1586
VERIFIER:		GENERAL	DWG NO: P-1586-001
CHECKER:		ARRANGEMENT	SCALE: 1:150 (A1)
DRAWER:		N.K.	CLASS: AHS
FOCAL MARINE & OFFSHORE			
SHANGHAI TEL: 86-21-58705766		SINGAPORE TEL: 65-69481387	
FAX: 86-21-50313285		FAX: 65-68481291	

THIS DOCUMENT AND THE CONTENT ARE COPYRIGHT AND REMAIN PROPERTY OF FOCAL MARINE & OFFSHORE. THEY MUST NOT BE COPIED IN WHOLE OR IN PART TO ANY THIRD PARTY FOR ANY PURPOSE WITHOUT PRIOR WRITTEN PERMISSION FROM FOCAL MARINE & OFFSHORE. THE RECEIPT OF THIS DOCUMENT IMPLIES ACCEPTANCE OF THIS CONDITION.